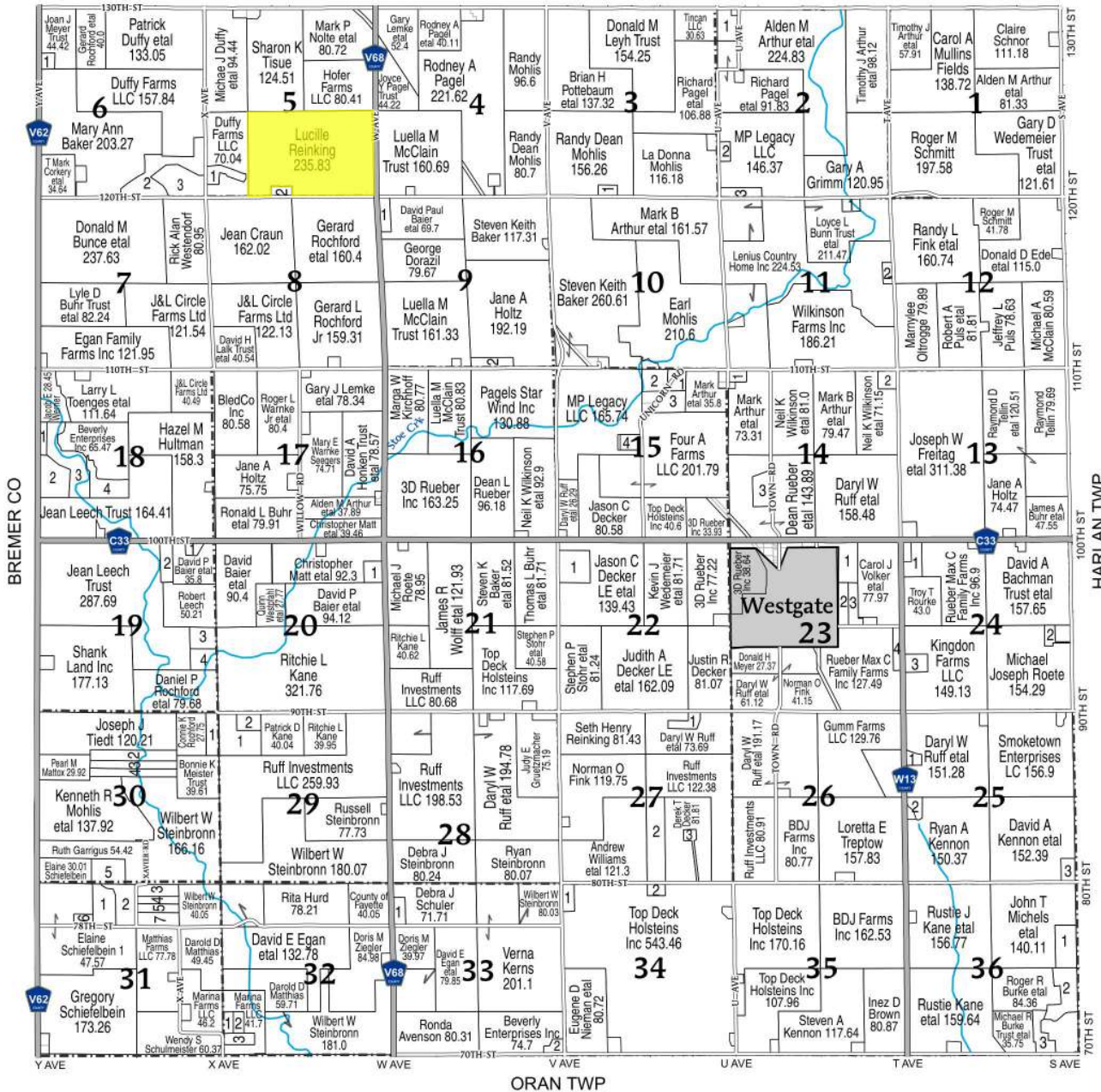


(Landowners)

BANKS TWP



ORAN TWP

FREMONT TOWNSHIP

SECTION 2

- 1 TINCAN LLC 14.38
- 2 SUBY, DANIEL S ETAL 5.03
- 3 WILKER, ZACHARY D 10

SECTION 3

- 1 DEVORE, LESLIE J 5

SECTION 5

- 1 HIRSCH, MATTHEW 10.36
- 2 ROCHFORD, JUDE W ETAL 5.14

SECTION 6

- 1 PATTISON, BRIAN D ETAL 5.51
- 2 BRUNS, ANDREW ETAL 41.35
- 3 BAKER, STEVEN K ETAL 28.36

SECTION 9

- 1 TOUSSAINT, MICHAEL 9.98
- 2 PAGELS STAR WIND INC 10

SECTION 11

- 1 MEYER, CHANCE A 5.16
- 2 BUNN, WILLIAM D ETAL 5.01

SECTION 14

- 1 BARTH, ROBERT S ETAL 5

- 2 WILKINSON, NEIL ETAL 8.31
- 3 CITY OF WESTGATE 13.84

SECTION 15

- 1 EHLERS, STEVEN P 8.78
- 2 COOK, ROGER L ETAL 12.41
- 3 MOHLIS, EARL L ETAL 13.63
- 4 FREMONT RIDGE LC 7.43

SECTION 18

- 1 GRUENBERG, DEBRA K 6.28
- 2 SCHROEDER, DENNIS E ETAL 25.76
- 3 WERNER TRUST, GARY D ETAL 34.01
- 4 KIRCHHOFF TRUST, ROBERT 19.25

SECTION 19

- 1 REINKING, SETH 5
- 2 LEECH, CHASE ETAL 11.37
- 3 LEECH, CARMEN 12.52
- 4 ROCHFORD, CONNIE K 12.53

SECTION 20

- 1 MAHONEY LE, ROY D ETAL 9.88

SECTION 22

- 1 TOP DECK HOLSTEINS INC 22.88

SECTION 23

- 1 CANNON, DARRYL F ETAL 23.16

- 2 STEINBRONN TRUST, RAYMOND A ETAL 10.65
- 3 BRICKMAN, DUANE R ETAL 10.12
- 4 RUEBER, BRENT 8.86

SECTION 24

- 1 CAREY, STEVEN T 12.07
- 2 INGELS, JEFFREY W ETAL 5.15
- 3 TELLIN, DELORIS R 10

SECTION 25

- 1 MCGRATH, THOMAS W ETAL 5.2
- 2 FLIEHLER, ADAM ETAL 5.95
- 3 KENNON, DAVID ETAL 7.38

SECTION 27

- 1 MAHONEY, BRET 8
- 2 DECKER LE, JUDITH A ETAL 35
- 3 DECKER, DEREK T ETAL 5.09

SECTION 29

- 1 ROCHFORD, DANIEL P ETAL 29.99
- 2 ROCHFORD, MICK C ETAL 9.47

SECTION 30

- 1 ROCHFORD, NEAL J ETAL 11.87
- 2 POOCK, BRADLEY DEAN 20.27
- 3 MOHLIS, RANDALL D 15.19

- 4 MOHLIS JR, DONALD E ETAL 15.41
- 5 MALEDY, MILTON R ETAL 18.58

SECTION 31

- 1 REINKING, KENT WILLIAM ETAL 19.99
- 2 MALEDY, MILTON R ETAL 20.59
- 3 GARRIGUS, RUTH 11.03
- 4 MISSY DOG LLC 7.17
- 5 MTP1 LLC 8.17
- 6 ORAN PORK LLC 5
- 7 SCHIEFFELBEIN, JAMES A ETAL 13.96

SECTION 32

- 1 BLUME, THOMAS E ETAL 5
- 2 KERNS, VERA 5
- 3 BUHR, JAMIE D ETAL 8.04

SECTION 33

- 1 STEINBRONN, RYAN R 8.61
- 2 CHRISTOPHER, MARTIN ETAL 5.87

SECTION 34

- 1 REINKING, CALEB ETAL 8
- 2 BROWN, NATHAN S ETAL 5.01

SECTION 36

- 1 POTRATZ, STEVEN R ETAL 20.03
- 2 STEFFEN, LARRY D ETAL 24.29
- 3 OAKES, WILLIAM G ETAL 13.15

