

Legend

- Non-Cropland
- CRP
- Iowa PLSS
- Cropland
- Tract Boundary
- Iowa Roads

Wetland Determination

- Restricted
- ▼ Limited
- Exempt from Conservation
- Compliance Provisions

United States Department of Agriculture (USDA) Farm Service Agency (FSA) maps are for FSA Program administration only. This map does not represent a legal survey or reflect actual ownership; rather it depicts the information provided directly from the producer and/or National Agricultural Imagery Program (NAIP) imagery. The producer accepts the data 'as is' and assumes all risks associated with its use. USDA-FSA assumes no responsibility for actual or consequential damage incurred as a result of any user's reliance on this data outside FSA Programs. Wetland identifiers do not represent the size, shape, or specific determination of the area. Refer to your original determination (CPA-026 and attached maps) for exact boundaries and determinations or contact USDA Natural Resources Conservation Service (NRCS).

USDA is an equal opportunity provider, employer, and lender.

2024 Program Year

Map Created April 16, 2024

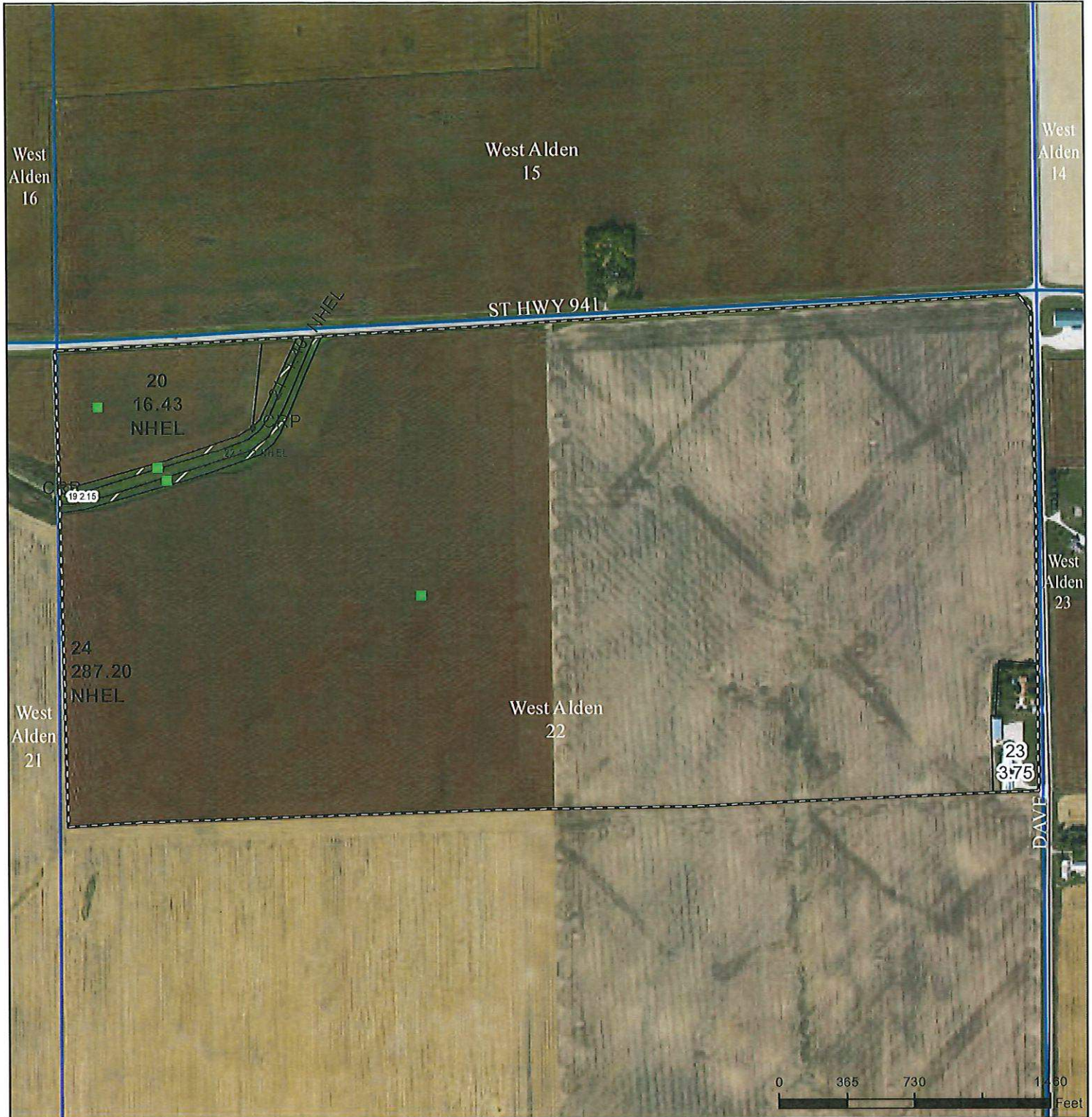
**TRACT 1**

Tract Cropland Total: 63.71 acres

Farm 7009

Tract 7816





Legend

- Non-Cropland
- Tract Boundary
- CRP
- Iowa PLSS
- Cropland
- Iowa Roads

Wetland Determination

- Restricted
- ▼ Limited
- Exempt from Conservation
- Compliance Provisions

United States Department of Agriculture (USDA) Farm Service Agency (FSA) maps are for FSA Program administration only. This map does not represent a legal survey or reflect actual ownership; rather it depicts the information provided directly from the producer and/or National Agricultural Imagery Program (NAIP) imagery. The producer accepts the data 'as is' and assumes all risks associated with its use. USDA-FSA assumes no responsibility for actual or consequential damage incurred as a result of any user's reliance on this data outside FSA Programs. Wetland identifiers do not represent the size, shape, or specific determination of the area. Refer to your original determination (CPA-026 and attached maps) for exact boundaries and determinations or contact USDA Natural Resources Conservation Service (NRCS).

USDA is an equal opportunity provider, employer, and lender.

2024 Program Year

Map Created April 16, 2024

Farm 7442

Tract 10676

**TRACT 2**

Tract Cropland Total: 306.74 acres





- Legend**
- Non-Cropland
  - CRP
  - Iowa PLSS
  - Cropland
  - Tract Boundary
  - Iowa Roads

- Wetland Determination**
- Restricted
  - ▼ Limited
  - Exempt from Conservation Compliance Provisions

**TRACT 3**

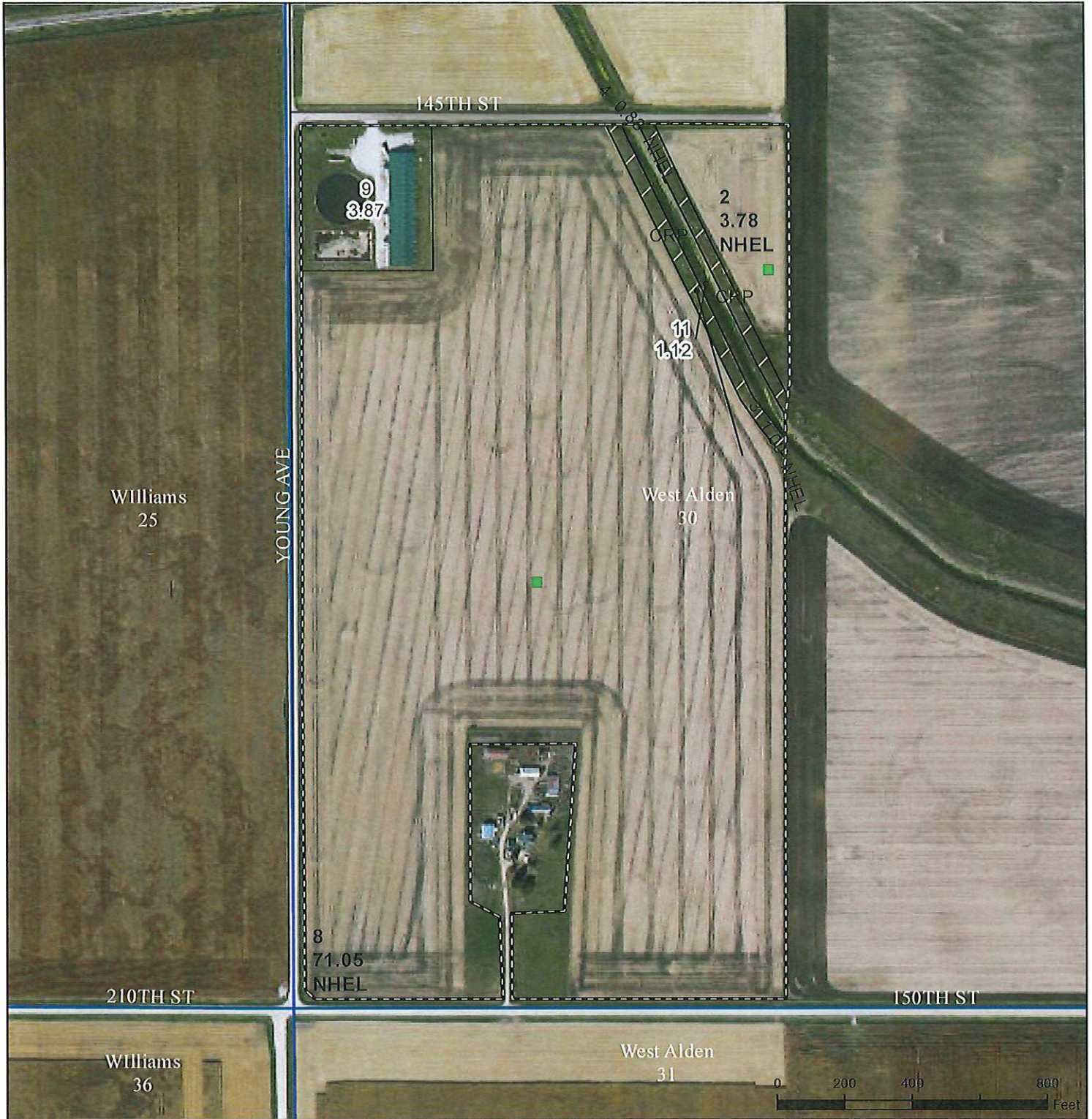
Tract Cropland Total: 166.04 acres

2024 Program Year  
 Map Created April 16, 2024  
 Farm **3427**  
 Tract **7417**

United States Department of Agriculture (USDA) Farm Service Agency (FSA) maps are for FSA Program administration only. This map does not represent a legal survey or reflect actual ownership; rather it depicts the information provided directly from the producer and/or National Agricultural Imagery Program (NAIP) imagery. The producer accepts the data 'as is' and assumes all risks associated with its use. USDA-FSA assumes no responsibility for actual or consequential damage incurred as a result of any user's reliance on this data outside FSA Programs. Wetland identifiers do not represent the size, shape, or specific determination of the area. Refer to your original determination (CPA-026 and attached maps) for exact boundaries and determinations or contact USDA Natural Resources Conservation Service (NRCS).

USDA is an equal opportunity provider, employer, and lender.





- Legend**
- Non-Cropland
  - CRP
  - Iowa PLSS
  - Cropland
  - Tract Boundary
  - Iowa Roads

- Wetland Determination**
- Restricted
  - ▼ Limited
  - Exempt from Conservation Compliance Provisions

United States Department of Agriculture (USDA) Farm Service Agency (FSA) maps are for FSA Program administration only. This map does not represent a legal survey or reflect actual ownership; rather it depicts the information provided directly from the producer and/or National Agricultural Imagery Program (NAIP) imagery. The producer accepts the data 'as is' and assumes all risks associated with its use. USDA-FSA assumes no responsibility for actual or consequential damage incurred as a result of any user's reliance on this data outside FSA Programs. Wetland identifiers do not represent the size, shape, or specific determination of the area. Refer to your original determination (CPA-026 and attached maps) for exact boundaries and determinations or contact USDA Natural Resources Conservation Service (NRCS).

## TRACT 4

Tract Cropland Total: 76.66 acres

2024 Program Year

Map Created April 16, 2024

Farm 7274

Tract 10679





United States  
Department of  
Agriculture

# Hardin County, Iowa



- Legend**
- Non-Cropland
  - Cropland
  - Iowa PLSS
  - Tract Boundary
  - CRP
  - Iowa Roads

- Wetland Determination**
- Restricted
  - ▼ Limited
  - Exempt from Conservation

**Compliance Provisions**

United States Department of Agriculture (USDA) Farm Service Agency (FSA) maps are for FSA Program administration only. This map does not represent a legal survey or reflect actual ownership; rather it depicts the information provided directly from the producer and/or National Agricultural Imagery Program (NAIP) imagery. The producer accepts the data 'as is' and assumes all risks associated with its use. USDA-FSA assumes no responsibility for actual or consequential damage incurred as a result of any user's reliance on this data outside FSA Programs. Wetland identifiers do not represent the size, shape, or specific determination of the area. Refer to your original determination (CPA-026 and attached maps) for exact boundaries and determinations or contact USDA Natural Resources Conservation Service (NRCS).

## TRACT 5

Tract Cropland Total: 318.29 acres

2024 Program Year

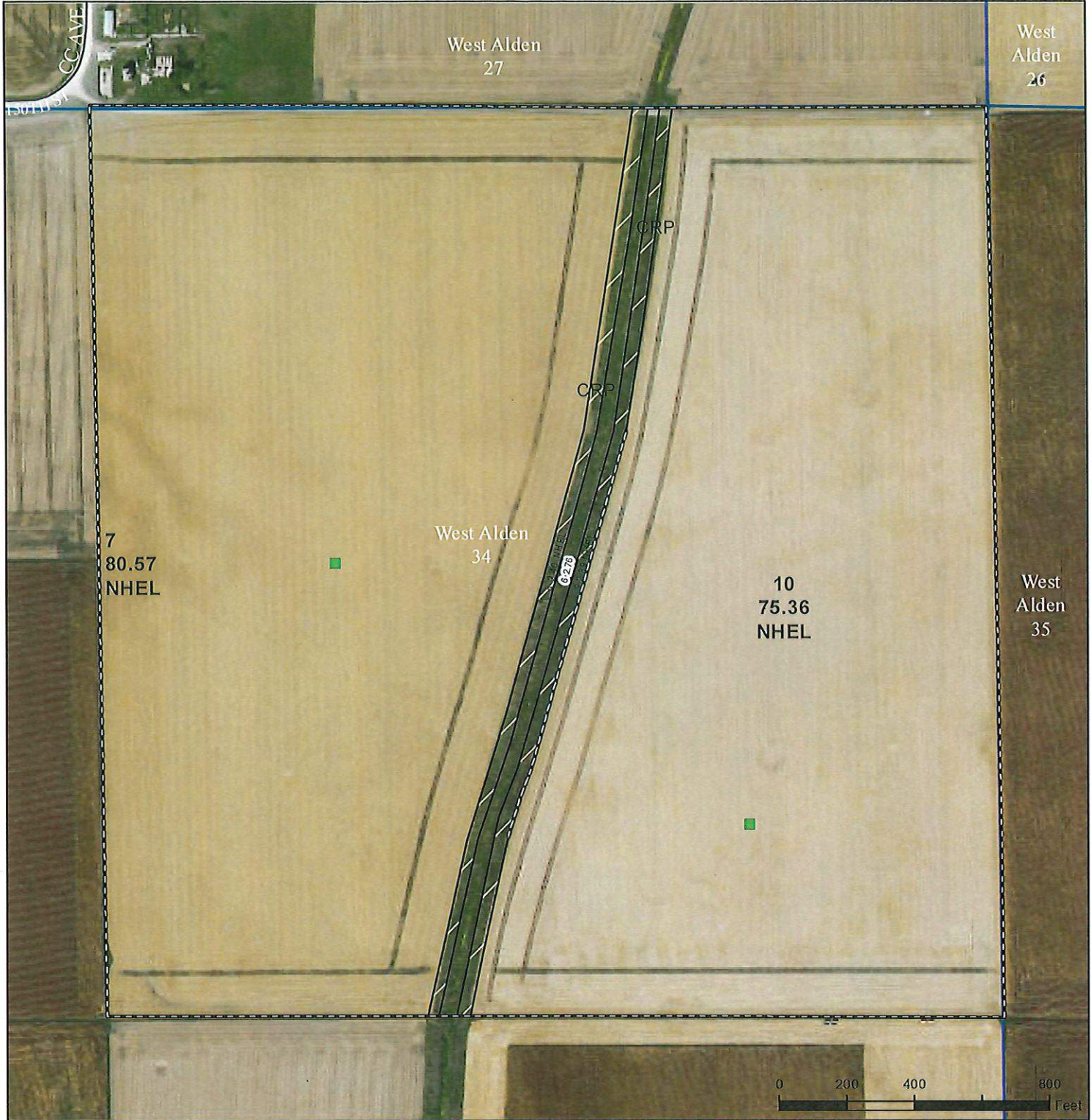
Map Created April 16, 2024

Farm 7274

Tract 10677

USDA is an equal opportunity provider, employer, and lender.





Legend

- Non-Cropland
- Cropland
- CRP
- Iowa PLSS
- Tract Boundary
- Iowa Roads

Wetland Determination

- Restricted
- ▼ Limited
- Exempt from Conservation Compliance Provisions

United States Department of Agriculture (USDA) Farm Service Agency (FSA) maps are for FSA Program administration only. This map does not represent a legal survey or reflect actual ownership; rather it depicts the information provided directly from the producer and/or National Agricultural Imagery Program (NAIP) imagery. The producer accepts the data 'as is' and assumes all risks associated with its use. USDA-FSA assumes no responsibility for actual or consequential damage incurred as a result of any user's reliance on this data outside FSA Programs. Wetland identifiers do not represent the size, shape, or specific determination of the area. Refer to your original determination (CPA-026 and attached maps) for exact boundaries and determinations or contact USDA Natural Resources Conservation Service (NRCS).

USDA is an equal opportunity provider, employer, and lender.

2024 Program Year

Map Created April 16, 2024

Farm 7442

Tract 1125

**TRACT 6**

Tract Cropland Total: 160.72 acres





**Legend**

- Non-Cropland
- CRP
- Iowa PLSS
- Cropland
- Tract Boundary
- Iowa Roads

**Wetland Determination**

- Restricted
- ▼ Limited
- Exempt from Conservation Compliance Provisions

**TRACT 7**

Tract Cropland Total: 147.40 acres

2024 Program Year

Map Created April 16, 2024

Farm **7009**

Tract **2702**

United States Department of Agriculture (USDA) Farm Service Agency (FSA) maps are for FSA Program administration only. This map does not represent a legal survey or reflect actual ownership; rather it depicts the information provided directly from the producer and/or National Agricultural Imagery Program (NAIP) imagery. The producer accepts the data 'as is' and assumes all risks associated with its use. USDA-FSA assumes no responsibility for actual or consequential damage incurred as a result of any user's reliance on this data outside FSA Programs. Wetland identifiers do not represent the size, shape, or specific determination of the area. Refer to your original determination (CPA-026 and attached maps) for exact boundaries and determinations or contact USDA Natural Resources Conservation Service (NRCS).

USDA is an equal opportunity provider, employer, and lender.





Legend

- Non-Cropland
- CRP
- Iowa PLSS
- Cropland
- Tract Boundary
- Iowa Roads

Wetland Determination

- Restricted
- ▼ Limited
- Exempt from Conservation
- Compliance Provisions

United States Department of Agriculture (USDA) Farm Service Agency (FSA) maps are for FSA Program administration only. This map does not represent a legal survey or reflect actual ownership; rather it depicts the information provided directly from the producer and/or National Agricultural Imagery Program (NAIP) imagery. The producer accepts the data 'as is' and assumes all risks associated with its use. USDA-FSA assumes no responsibility for actual or consequential damage incurred as a result of any user's reliance on this data outside FSA Programs. Wetland identifiers do not represent the size, shape, or specific determination of the area. Refer to your original determination (CPA-026 and attached maps) for exact boundaries and determinations or contact USDA Natural Resources Conservation Service (NRCS).

USDA is an equal opportunity provider, employer, and lender.

2024 Program Year

Map Created April 16, 2024

**TRACT 8**

Tract Cropland Total: 137.03 acres

Farm 7009

Tract 9979