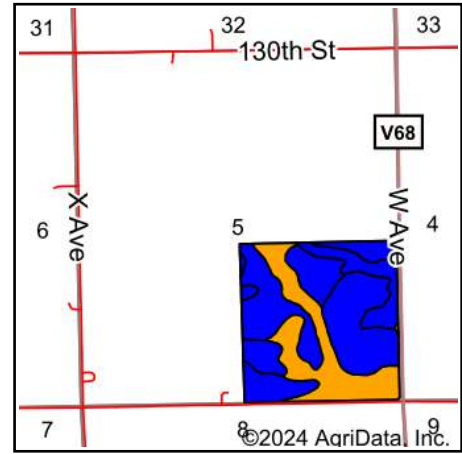
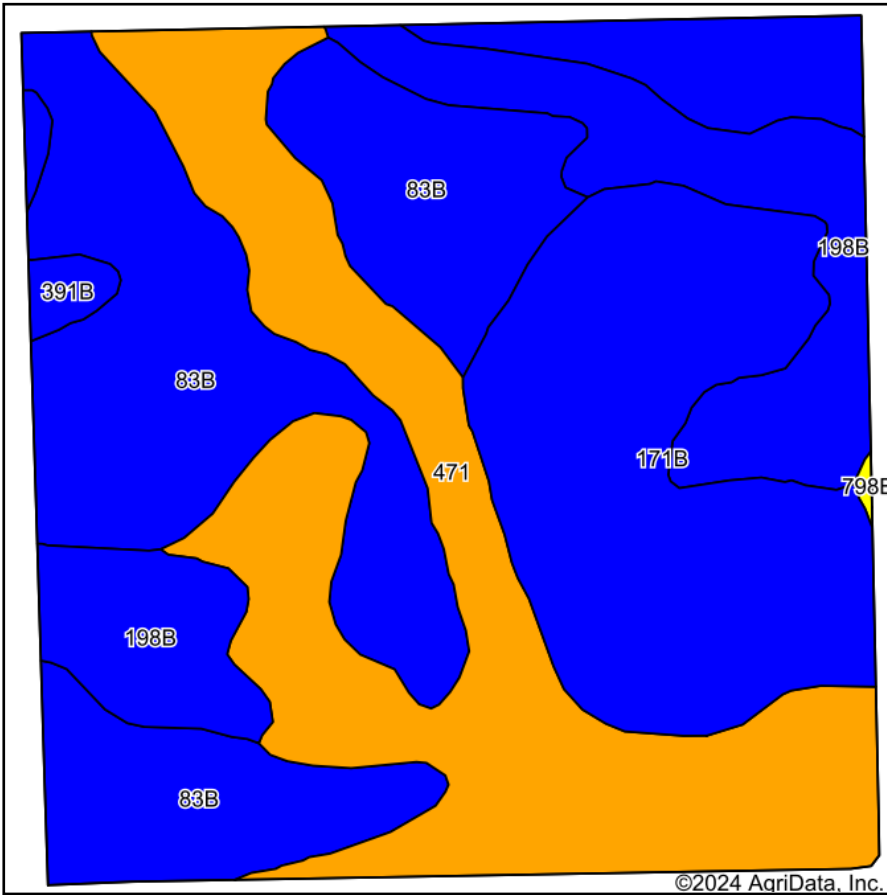


Soils Map - Tract 2



State: **Iowa**
 County: **Fayette**
 Location: **5-92N-10W**
 Township: **Fremont**
 Acres: **154.8**
 Date: **12/26/2024**



Maps Provided By:
surety
 CUSTOMIZED ONLINE MAPPING
 © AgriData, Inc. 2023 www.AgriDataInc.com



Soils data provided by USDA and NRCS.

Area Symbol: IA065, Soil Area Version: 29

Code	Soil Description	Acres	Percent of field	CSR2 Legend	Non-Irr Class *c	*i Corn Bu	*i Soybeans Bu	CSR2**	CSR	Bromegrass alfalfa AUM	Bromegrass alfalfa hay Tons	Corn Bu	Kentucky bluegrass AUM	Oats Bu	Smooth bromegrass AUM	So Bu
83B	Kenyon loam, 2 to 5 percent slopes	55.58	35.9%		Ile	225.6	65.4	90	85							
471	Oran loam, 1 to 3 percent slopes	41.84	27.0%		Iw	217.6	63.1	74	80							
171B	Bassett loam, 2 to 5 percent slopes	33.63	21.7%		Ile	212.8	61.7	85	80	10.7	6.4	215	3.9	92	6.4	
198B	Floyd loam, 1 to 4 percent slopes	21.92	14.2%		Ilw	222.4	64.5	89	80							
391B	Clyde-Floyd complex, 1 to 4 percent slopes	1.68	1.1%		Ilw	216.0	62.6	87	73							
798B	Protivin loam, 1 to 4 percent slopes	0.15	0.1%		Ile	193.6	56.1	61	55							
Weighted Average						1.73	220.1	63.8	84.4	81.7	2.3	1.4	46.7	0.8	20	1.4

Soils data provided by USDA and NRCS.

Maps Provided By:



© AgriData, Inc. 2023

www.AgriDataInc.com

**IA has updated the CSR values for each county to CSR2.

*i Yield data provided by the ISPAID Database version 8.1.1 developed by IA State University.

*n: The aggregation method is "Weighted Average using all components"

*c: Using Capabilities Class Dominant Condition Aggregation Method