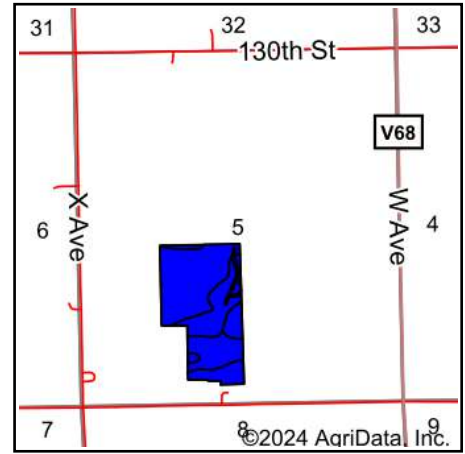
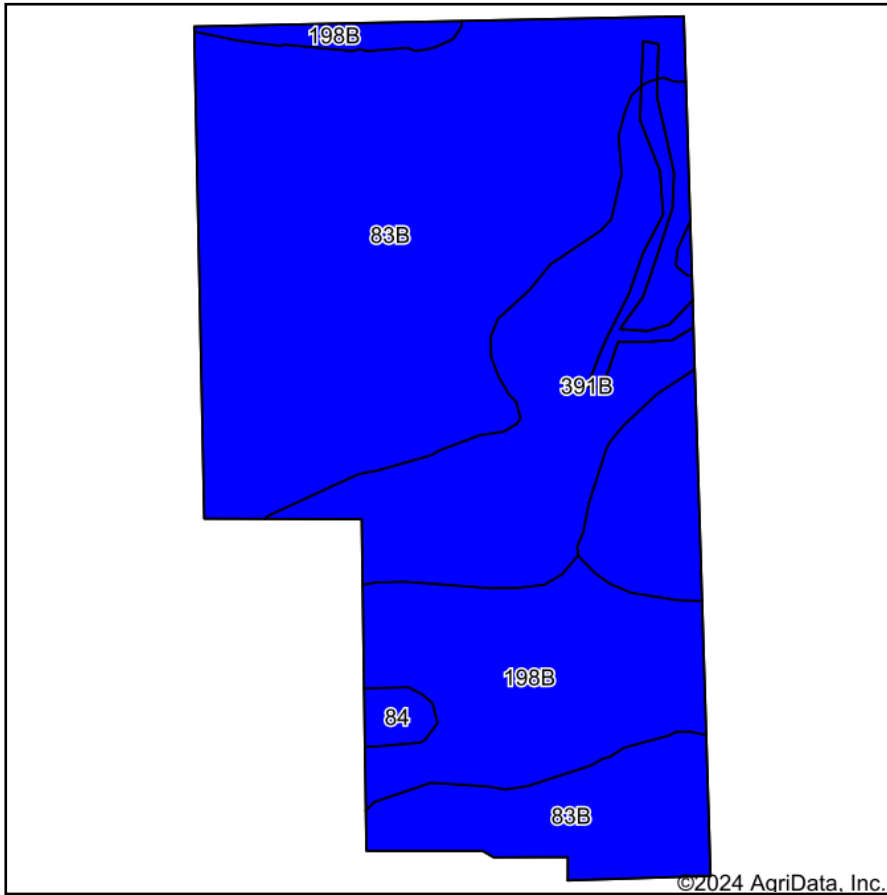


# Soils Map - Tract 1



State: **Iowa**  
 County: **Fayette**  
 Location: **5-92N-10W**  
 Township: **Fremont**  
 Acres: **60.13**  
 Date: **12/26/2024**



Maps Provided By:  
  
 CUSTOMIZED ONLINE MAPPING  
 © AgriData, Inc. 2023 [www.AgriDataInc.com](http://www.AgriDataInc.com)



Soils data provided by USDA and NRCS.

Area Symbol: IA065, Soil Area Version: 29

Code	Soil Description	Acres	Percent of field	CSR2 Legend	Non-Irr Class *c	*i Corn Bu	*i Soybeans Bu	CSR2**	CSR	*n NCCPI Soybeans	
83B	Kenyon loam, 2 to 5 percent slopes	36.21	60.3%		Ile	225.6	65.4	90	85	77	
391B	Clyde-Floyd complex, 1 to 4 percent slopes	12.51	20.8%		Ilw	216.0	62.6	87	73	86	
198B	Floyd loam, 1 to 4 percent slopes	10.79	17.9%		Ilw	222.4	64.5	89	80	88	
84	Clyde clay loam, 0 to 3 percent slopes	0.62	1.0%		Ilw	224.0	65.0	88	75	85	
<b>Weighted Average</b>						<b>2.00</b>	<b>223</b>	<b>64.7</b>	<b>89.2</b>	<b>81.5</b>	<b>*n 80.9</b>

\*\*IA has updated the CSR values for each county to CSR2.

\*i Yield data provided by the ISPAID Database version 8.1.1 developed by IA State University.

\*n: The aggregation method is "Weighted Average using all components"

\*c: Using Capabilities Class Dominant Condition Aggregation Method