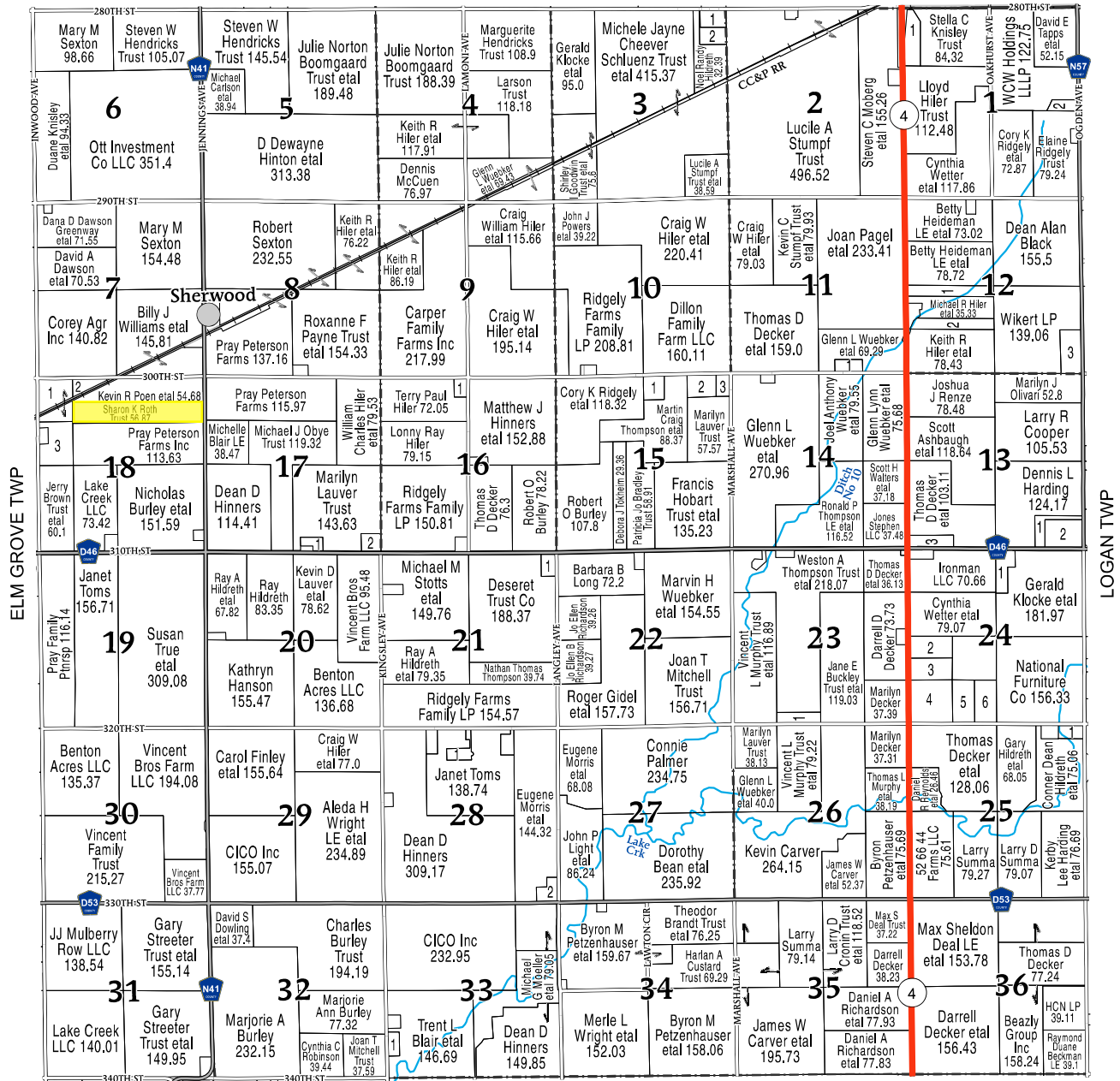


(Landowners)

TWIN LAKES TWP



CALHOUN TWP

LAKE CREEK TOWNSHIP

SECTION 1

- 1 COUNTY OF CALHOUN 16.66
- 2 ROBY, ROBERT J ETAL 6.49

SECTION 3

- 1 HILDRETH, NOEL RANDY ETAL 9.51
- 2 CELLULAR INC 9.99

SECTION 11

- 1 WUEBKER, GLENN ETAL 7.09

SECTION 12

- 1 HILER, THOMAS G 19.59
- 2 HILER, THOMAS 18.59
- 3 HAMMEN, RANDALL G ETAL 18.8

SECTION 13

- 1 HILDRETH, GARY ETAL 9.52
- 2 HILDRETH, GARY ETAL 21.1
- 3 ANDERSON, THOMAS W ETAL 10.36

SECTION 15

- 1 THOMPSON, NATHAN T 10.32
- 2 THOMPSON, CLINTON S ETAL 13.3

- 3 DOHERTY, SCOTT T ETAL 6.29

SECTION 16

- 1 HILER, MICHAEL R ETAL 5

SECTION 17

- 1 LAUVER, KEVIN D ETAL 5.07
- 2 LAUVER, ANDREW J ETAL 7.09

SECTION 18

- 1 BLOCK, ROBERT L ETAL 27.52
- 2 COREY AGR INC 7.24
- 3 BLOCK, ROBERT L ETAL 27.93

SECTION 21

- 1 BAWDEN, STEVEN S 6.6

SECTION 23

- 1 SANDER, DAN ETAL 9.71

SECTION 24

- 1 KLOCKE, GERALD A ETAL 13.24
- 2 HILER, KEITH R ETAL 19.36
- 3 HILER, CRAIG W ETAL 19.3
- 4 THOMPSON LE, MARTIN 19.3
- 5 WALTERS, SCOTT H ETAL 19.64

- 6 JONES STEPHEN LLC 19.62

SECTION 25

- 1 HILDRETH, CONNER DEAN 6.75

SECTION 28

- 1 ALTATY FARMS INC 19.39
- 2 LIGHT, JOHN P ETAL 8.5

SECTION 33

- 1 GULBRANSON, TANDY ETAL 5.64

